



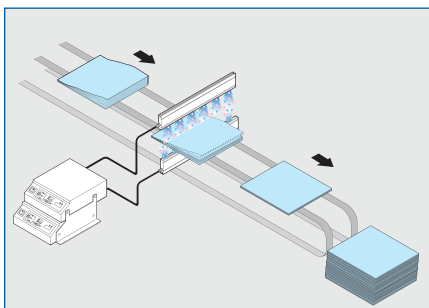
## Chargemaster VCM

### ELECTROSTATIC CHARGING GENERATOR

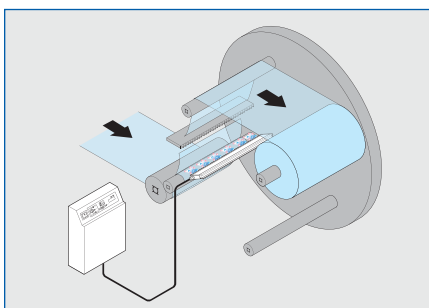
The Chargemaster VCM is programmable for either voltage or current control mode to supply the high voltage for charging bars and various charging applicators used to electrostatically bond materials. The Chargemaster VCM provides a simple and economical solution for a wide range of production processes maximizing the efficiency of the application.

- Capable of voltage or current control mode operation
- Unique scroll-through menu programming control
- Remote operation capability
- Large LCD for mode and output display
- Short circuit protected output

## Applications



Catalogue Stacking



Roll to Roll Transfer



Bi-Polar Configuration (Positive / Negative)



Wallmount (single polarity)

The Chargemaster VCM is a switch-mode, power factor corrected, charging generator. The unit's output current is electronically restricted and protected against arcing. The output voltage can be set between 0 and the unit's maximum voltage in voltage mode, or will automatically adjust to maintain a desired current level when operating in current mode. All of this is accomplished using the unique scroll-through menu programming capability of the Chargemaster VCM.

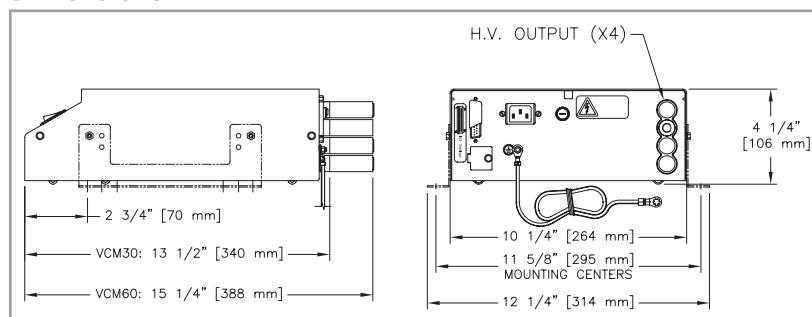
## Remote Control Functions

- Turn high voltage on and off
- Output voltage adjustment
- Output current display
- Overload indication

## Specifications

<b>Input Voltage</b>	85-264 VAC @ 47-63Hz - (self adjusting)
<b>Output Voltage</b>	VCM 30: 0-30 kV @ 5mA VCM 60: 0-60 kV @ 2.5mA
<b>Output Stability</b>	Better than 2%
<b>Voltage Rise Time</b>	Under 70 msec
<b>Output Ports</b>	4
<b>Remote Output Adjust</b>	Analog Signals, 0-20/4-20 mADC or 0-5/0-10 VDC
<b>Remote Input/Output</b>	External Contact Closure via D/sub connector, and I/O programmable menu
<b>Remote On/Off</b>	via D/sub connector, and programmable menu
<b>Enclosure</b>	Steel
<b>Dimensions</b>	VCM 30: 30 kV – 10.5"W x 4.25"H x 13.5"D VCM 60: 60 kV – 10.5"W x 4.25"H x 15"D
<b>Weight</b>	16.5 lbs
<b>Ambient Operating Temperature</b>	32°F to 131°F (0°C to 55°C)
<b>Approval</b>	CE

## Dimensions



**BONDLINE**  
STATIC CONTROL SOLUTIONS

**SIMCO ION**<sup>TM</sup>  
An ITW Company

P/N 5201072 Rev. B  
© 2011 Simco-Ion – All rights reserved.  
Specifications are subject to change without notice.

**Simco-Ion**

2257 North Penn Road  
Hatfield, PA 19440-1998

Tel: 800.203.3419 (in USA)  
Tel: 215.822.6401

customerservice@simco-ion.com  
www.simco-ion.com