

CleanSweep®

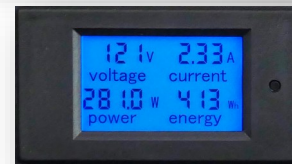
Power Distribution Unit (PDU) with EMI Filtering and Advanced Transient Surge Protection

Clean Power Free of Transients and High-Frequency Noise

OnFILTER CleanSweep® EMI power distribution units (PDU) provide transient-free and noise-free AC power for your sensitive equipment. Innovative design accomplishes a combination of multi-stage transient surge protection and maximum noise suppression of signals polluting your power lines and ground, freeing your equipment from harmful interference.

Safe and clean power is essential for uninterrupted and problem-free operation of electrical and electronic equipment. Transient surges and electromagnetic interference (EMI) spreads through power lines and ground, causing downtime and errors in today's equipment and may inflict equipment and component damage.

Unique design of OnFILTER' CleanSweep® series focuses on the properties of real-life signals on power lines and ground and produces maximum attenuation of the "worst offenders" on power lines.



Applications

- Data Centers
- Electronic manufacturing
- Semiconductor fabrication
- Test and measurements
- Industrial robotics
- Medical
- Military and aerospace
- Wherever EMI is an issue

Features

- Easy plug-in installation
- Optimized for power lines
- Effective noise suppression for all types of noise
- Advanced surge transient protection
- Display: V, I, W, Whr
- Models for up to 250V AC 20A

Increased Up-Time

OnFILTER' CleanSweep® power distribution units reduce equipment downtime caused by transients and EMI and increase its performance and productivity by providing clean power to your sensitive equipment

Real-Life Applications

Unlike commodity filters designed for compliance measurements in a laboratory environment, CleanSweep® filters are optimized for effective suppression of surge transients and noise in actual applications providing superb attenuation in broad range of power disturbances.

Suppression of Transients and EMI Noise on Power Lines and Ground

OnFILTER' CleanSweep® PDU provide transients and noise suppression for differential mode (between power live and neutral), common-mode (between live, neutral and ground) and, uniquely, for ground itself

Advanced Surge Protection

OnFILTER CleanSweep® series PDU utilize multi-stage surge protection by reducing residual high-voltage "spikes" down to a negligible level

CleanSweep® AR Series PDU with Advanced Surge Protection and EMI Filtering



Specification

OnFILTER CleanSweep® rack-mounted PDUs incorporate two stages of surge transient protection and EMI filters utilizing proprietary technology to provide maximum noise and surge transient suppression for your sensitive electronics.

Parameter AR Series PDU

Some parameters vary depending on specific configuration

Absolute Maximum Ratings

Rated Voltage, RMS: 250V Max.
 Rated Current, RMS: 20A Max. total for all outlets. Contact us for other ratings

Transient Surge Suppression

High peak surge current rating: 22kA, single 8/20µs pulse
 Clamping voltage—short transients: less than 10V (typ.)
 Clamping voltage—long surges: under 640V

EMI Filtering

Types: Differential mode; Common mode; Ground

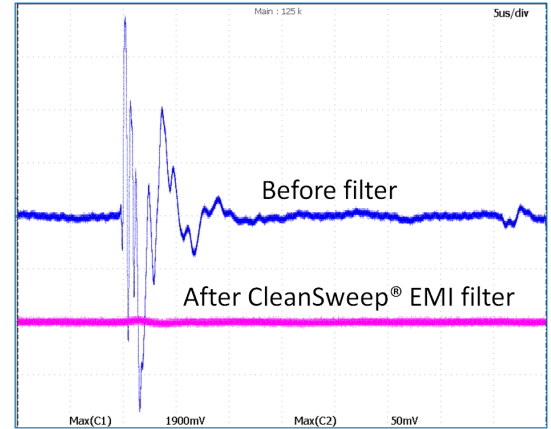
Pulse Attenuation (typical or better):

Differential mode: 24dB
 Common mode: 20dB

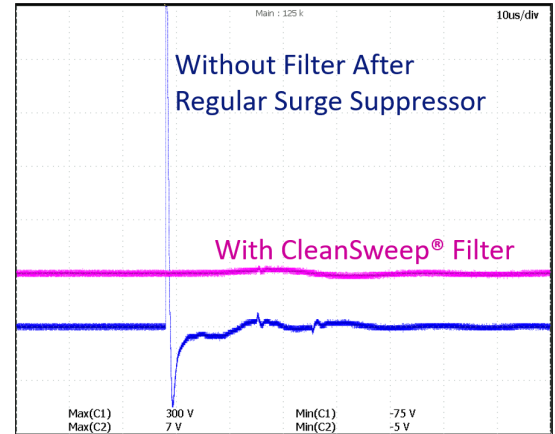
Continuous emission: See graphs of typical performance. Measured in 1/100 Ohms setup (closely resembles actual environment)

Switch: Switch integrated with circuit breaker

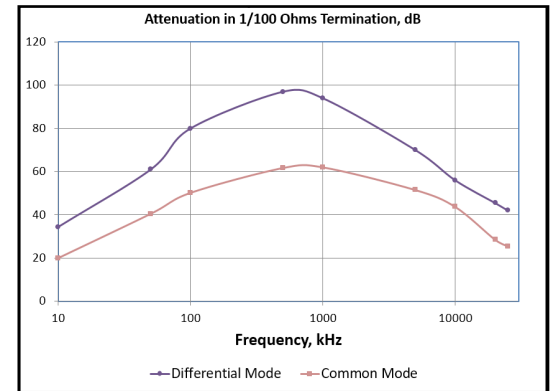
Display: Voltage, current, power, energy



Typical Performance (Differential Mode)



Typical Power Surge Attenuation



Typical Frequency Domain Attenuation

Ordering Information

AREC148FD-xxxx

Where "xxxx" is the code for the plug on the power cable supplied with PDU. Select from the table below. Other models may be available—contact us.

CleanSweep AR Series PDU Plug Code					
OUTLET	ORDERING CODE	OUTLET	ORDERING CODE	OUTLET	ORDERING CODE
	N515 ~125V 15A		N615 ~250V 15A		EUSK ~250V 16A
	N520 ~125V 20A		N620 ~250V 20A		EUUK ~250V 13A
	L515 ~125V 15A		L520 ~125V 20A		L615 ~250V 15A
	L620 ~250V 20A		309B1 IEC60309 6h (blue) ~250V 16A		BS546 ~250V 15A

Other models may be available - contact us



www.bondline.com.au
 Sales@bondline.com.au
 (+61) (02) 9757 3590

OnFILTER, Inc.
 730 Mission Dr. Ste. 102
 Santa Cruz, CA 95060 U.S.A.
 Tel. +1.831.824.4052
 FAX +1.206.350.7458
www.onfilter.com
info@onfilter.com

